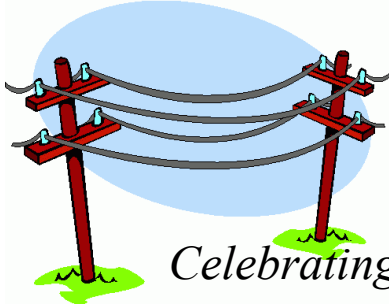


The

# LEAVENWORTH

# EXCHANGE



*Celebrating together as friends and neighbors*

Volume 26  
Issue 6



June 2011

**Reminder!** The next LNA meeting will be **June 16, 2011, 7:00 PM** at the VFW at 3302 Leavenworth St (in the meeting hall on the lower level). Enter on the south side main entrance facing Leavenworth OR on the north side to avoid using stairs. **Mark it down!**

## Letter from the President....

I get some strange phone calls now and then. They range from wanting to know who owns the dog running around the neighborhood to why they were late picking up trash. And sometimes it's about welcoming a new neighbor. What a great concept *that* is. At one time we actually had a "Welcome Wagon" type committee. Should this be resurrected? Why not?

Of course the biggest issue is discovering just who is coming into this neighborhood. We still have a long way to go to get involvement on each block. That can mean just getting a membership or two. And once that happens, the true concept of an association becomes closer to reality. We are quite willing to add people to either the hard-copy or the e-mail version of the Exchange. Neighbors just have to let me know.

As the annual Clean-Up shows, along with the many other projects we are all proud of, we can accomplish a lot with our association. It's summer, people are out and about, say "Hi". Especially to the new neighbors.

**Jim Thompson**

## Color It Clean - 2011

By Jim Thompson

It was questionable if the rain would come or not. Turned out to be a wonderful day to help get this neighborhood clean. And year after year, I keep wondering where does all this junk come from? And of course, year after year we can count on a group of dedicated volunteers to help unload trucks, work the neighborhood to pick up stuff, and in general, chip in to help create a clean neighborhood.

We filled over three packer trucks this year. If you haven't seen the video on our facebook page about a truck eating a couch, it says it all! (Thank you to Scott Redd for his videography!). Once again we collected scrap metal and for the first time in a long, long time we received a check from the metals processor. With the amount of "scrapers" looking for our metal, both on the phone to me and sniffing that morning, we were at an all time low for the amount recycled. But 3500 pounds is not too bad!

*A word of warning about scappers - be watchful for suspicious behavior. The extremes these vandals go to get a few pounds of copper or whatever, is unbelievable. If there is a vacant house near you, keep an eye out and do not be afraid to call 911 if you see ANYTHING suspicious.*

We have always received donations for our volunteers from some of the businesses in the neighborhood. When visiting Avanza, Aldermans, Bud Olsons, Dominos, Runza, Godfathers and the Kwik Shop on 36th, be sure and thank them for their assistance. They are good neighbors!! And for the crew, special thanks to John Constanzo, Anne Meysenburg, Zach Johnson,


*Color It Clean continued on Page 7*

## Let's Start Building Energy Smart Communities

The reEnergize program helps homeowners and commercial building owners make energy-saving upgrades that improve the comfort and value of their buildings.

Start Zone homeowners can receive incentives on energy-saving upgrades, and Start Zone commercial building owners can get assistance in planning and implementing energy-efficiency improvements. A map of the Omaha Start Zone is below.

Visit [www.reEnergizeProgram.org](http://www.reEnergizeProgram.org) or call (402) 403-3981 for more details.



*Building Energy Smart Communities starts one building at a time.  
reEnergize is a collaborative effort between the U.S. Department of Energy  
and the Cities of Omaha and Lincoln.*

### Taking A Look.....

By Carol Haas

Look around at the new stuff!

If you haven't driving west on St. Mary's lately – do so! The City has planted a number of trees and shrubs along the newly refurbished street. They look wonderful and are a great addition to the neighborhood from 29<sup>th</sup> Street to Park Avenue.

And, take a look at the new sculpture at the house just east of the Side Door Lounge. The house looks great and the sculpture adds additional artwork to the neighborhood.



**J O R G E N S E N  
A W N I N G S I N C**

**ALL YOUR AWNING AND CANVAS NEEDS**

**FLAG, ZIPPER, TENT AND BOAT COVER REPAIRS**

**NICKI CALLAN  
VICE PRESIDENT  
345-7224**

**3305 LEAVENWORTH ST  
OMAHA, NE 68105**

**WWW.JORGENSENAWNINGS.COM**

## Alderman's Bar

**60+ Years  
Family Owned Business  
"Where Friendly People Meet"**

**3216 Leavenworth      341-5190**

### Hands to Harvest update

By Carol Haas

The garden has been expanded this year to include three additional plots. Work has also been done to shore up the west facing entry to reduce water runoff. Plans are underway for the construction of a pergola at the entry to the garden.

An event board has also been added. Check it out for items of interest and activities at the garden!

**Want to receive The Exchange by e-mail?**

Simply send an email message to [zippijd@aol.com](mailto:zippijd@aol.com) and request that you'd like to start receiving the electronic version of the LNA newsletter. Each month, you will be sent a full color pdf version of the newsletter ahead of the print mailing. Or let us know if you want additional e-mail addresses of neighbors, co-workers, friends added to our listing!!

### Information for Contributors

To contribute to *the Exchange*, please contact  
**Jim Thompson, zippijd@aol.com.**

Deadline for the July issue is  
**July 7, 2011.**

Content submitted may be edited as needed.

### Refugee Resettlements

By Renae Overbeek, Lutheran Refugee Services.

A refugee is a person outside of his or her country of nationality who is unable or unwilling to return because of persecution or a well-founded fear of persecution on account of race, religion, nationality, membership in a social group or political opinion. Refugees are considered immigrants, but they are a special class of immigrant.

Refugees are 100% legal to live and work in the USA. Essentially, they are invited into our country by the US government. Because they are persecuted in their home country and cannot return, they often don't have citizenship or a passport. The legal refugee status lasts for one year, then the refugee can apply for their green card (also known as legal permanent resident status). After 5 years of having a green card, refugees are eligible to apply for citizenship.

There are over 10 million refugees in the world today. Approximately 75,000 are accepted to be resettled into the USA each year. There are many countries in the world that resettle refugees, but the USA accepts the highest number.

Lutheran Refugee Services (LRS), a program of Lutheran Family Services, is a resettlement agency. Being a resettlement agency means that they have a contract with the Department of State to provide certain services to the refugee clients. The services are designed to help the refugee get their new life started in the USA. A few of the services are: setting up a furnished apartment before arrival, getting a social security card, applying for food stamps and Medicaid, enrolling children in school, opening a bank account, and referring adults to English classes. LRS resettled 408 refugees in fiscal year 2010.

*Refugees, continued on Page 5*



# FRESH *Every* WEEKEND

*Saturdays*

THE OLD MARKET

MAY 7 *thru* OCT 15  
8:00 AM – 12:30 PM

*Sundays*

AKSARBEN VILLAGE

MAY 8 *thru* OCT 16  
9:00 AM – 1:00 PM

PRESENTED BY:

Creighton  
UNIVERSITY  
Medical Center

Creighton  
MEDICAL ASSOCIATES



SPONSORED BY: SECURITY NATIONAL BANK, HYVEE, PHYSICIANS MUTUAL,  
THE READER, BLUE CROSS AND BLUE SHIELD OF NEBASKA AND AKSARBEN CINEMA

find us on

omahafarmersmarket.org

NOW  
ACCEPTING SNAP  
Supplemental Nutrition Assistance Program

### Do You Have A Worn-out American Flag?

The VFW at 3302 Leavenworth collects old flags and disposes of them in a proper ceremonial fashion. Bring your old one to the next LNA meeting. And fly your new one proudly!!!

### FRED'S FRIENDLY SERVICE

2901 Leavenworth Street  
Complete Auto Repairing  
"Stop in Today for the  
Friendly Way"



342-9519

RON & ROB WACKERHAGEN  
*The FULL SERVICE Guys!!!!*



ROAD  
SERVICE

To United Methodist Ministries.....

Lisa,

I want to thank you for lining up the volunteers to work at our neighborhood gardens on Saturday, May 14th. The weather was a bit chilly, but everyone kept warm by working hard. We were able to perform a spring cleanup at two of our flower gardens.

The following folks helped out:

Bob Wiley  
Carolyn Elledge  
Liz and Jack Boyer  
Sherry Houston  
Brandan Smith

It was a pleasure to host them.  
Thanks again!

Bill Kline  
LNA Garden Committee

**First Lutheran Church 542 So. 31 Street**  
**345-7506 Dial-a-Meditation 345-1555**

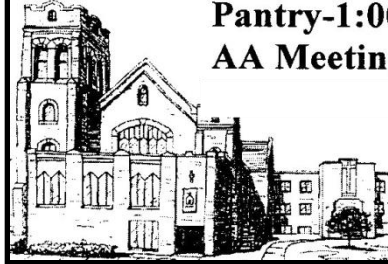
**firstlutheranomaha.org**

**Worship-Sunday 9:30 am**

**Sunday School-10:45 am**

**Pantry-1:00-2:30 Mon.-Fri.**

**AA Meetings-7:00 pm Mon.**



*Building a Neighborhood  
for Christ*

### S.O.N.A. Update (South Omaha Neighborhood Alliance)

By Carol Haas

The annual SONA recognition/awards banquet was held June 2, at the KROC Center. This is the primary fundraiser for SONA and also recognizes persons/groups who represent outstanding achievements.

This year's award winner for Volunteer of the Year was Gary Kastrick, retired faculty member at South High. Gary has spent considerable time teaching the history of South Omaha and conducting tours for OPS third graders throughout the south Omaha area. He has assembled a collection of materials relating to the history of SoO and with his students recorded information from over 300 residents.

The winner of the Project of the Year was the South High Alumni Association which was instrumental in raising funds for the construction of South High's new Collin Stadium. The group also provides a number of scholarship to South High seniors.

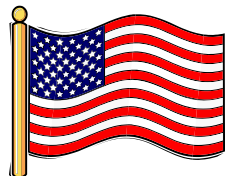
Speaker for the evening was Gary Kastrick.

UNIVERSITY OF  
**Nebraska**

BOARD OF REGENTS

**Bob Whitehouse**  
Regent

1103 Mackensy Drive  
Papillion, NE 68046  
(402) 339-5515  
FAX: (402) 592-7767  
bwhitehouse@nebraska.edu  
District No. 4



**Fly the Flag Proudly**  
**Flag Day**  
**June 14**



Tim Reeder 612-3833  
treeder@npdodge.com



**Omaha's Old House Specialist!**  
Since 1998 Tim Reeder has helped hundreds of people like you buy and sell their great old homes. Backed by NPDodge Real Estate, the areas oldest and best real estate firm, Tim Reeder & the good life group have the experience, knowledge and tools to get the job done right the first time.



## 5.8K RUN • MIDTOWN CROSSING

JULY 16, 2011

Entry Fees:

\$25 – Timed Run

\$15 – Fun Run / Walk

\$10/person + \$100 sponsorship - 5 person teams

In 2010, long-time Omaha resident, John MacKenzie climbed Mount Kilimanjaro to benefit *CASA - Court Appointed Special Advocates for Children*. This year, MacKenzie is organizing his inaugural 5.8K run (Kilimanjaro is 5.8K high!) to raise money and awareness for *CASA*.

Besides the 5.8K run, a shorter walk will be offered to allow everyone to get out and participate while helping to protect our children.

One lucky winner will win a **FREE TRIP** to climb Mount Kilimanjaro - the tallest free-standing mountain in the world! Additionally, over **\$1400** worth of prizes will be awarded to flight winners! Each participant will also receive a race package with a t-shirt and over **\$100** worth of coupons.

**For more information or to register visit:**  
**[www.kiliismycasa.bbnow.org](http://www.kiliismycasa.bbnow.org)**

\*Register by July 1, 2011 to be eligible to win trip

*Refugees, continued from Page 3*

Most people in Omaha think of the Sudanese when they think of refugees, but there are very few Sudanese coming to Omaha as refugees these days. Mostly they are people that have fled from Burma (also known as Myanmar) or Bhutan. Both of these people groups have horrifying tales of persecution because of their ethnicity. The largest Burmese ethnicity in Omaha is the Karen (pronounced Kah-REN). Their population is estimated at 3,000-4,000.

Refugees come to the USA seeking peace and freedom. Life in the refugee camps is primitive. Health care is not good and the food rations are not nutritious. It's not legal for refugees to work outside of the camp and there are very few jobs inside the camp. The children don't have a future in the refugee camps, and so many parents choose to come to the USA to offer their children a better life. It's also very difficult, because the Burmese and Bhutanese were self-sufficient and independent before persecution began. Living in the camp, they cannot provide for themselves, and they are eager to begin going that once they arrive in the USA.

If you are interested in learning more about refugee situations please contact me at 402-536-3512 or at [roverbeek@lfsneb.org](mailto:roverbeek@lfsneb.org).

## Neighborhood Carnival!!

On the Patio at First Central Congregational Church, 421 South 36<sup>th</sup> Street.....

Saturday, June 18<sup>th</sup>, 4 to 7 pm

Fun events for the whole family: face painting, pie toss, pop walk, portraits, and any many other booths.

Music and food all evening - please join us!



**EXPERT PLUMBING SERVICE  
FOR OVER 60 YEARS**

**CENTRAL  
341-0450**

**MILLARD  
333-1869**

**EMERGENCY  
306-9232**

Hello LNA,

My name is Jessica Clem, and I am the AmeriCorps VISTA working at the Neighborhood Center with Liz Moldenhauer. We are still working on our Listening Project, and I wanted to shoot you a quick email about what the project entails. It is a painless, quick interview about resident satisfaction with city services and inquiries about what they enjoy about their neighborhoods, what they would like to change, keep the same, etc.

I would like to ask a few members of the Leavenworth Neighborhood Association roughly 10 questions pertaining to these subjects. If you like, we could do them via email as well. The purpose of these interviews is to get a firsthand look at how city services are helping or hindering neighborhood development, and to keep the Neighborhood Center in the loop about how to improve our programs and what community members think about their neighborhoods.

Hope to hear from you soon! Thanks!

**Jessica R. Clem**

*AmeriCorps VISTA Member: Omaha Serves*

*Freelance Contributor: Shout! Magazine*

**Note to Members: Names will gathered at the meeting on June 16 for submission to Ms. Clem. The more that sign up, the better!!!**

To print our monthly newsletter,  
the Leavenworth Neighborhood Association  
proudly uses

**OH-K FAST PRINT**

located at

4604 Dodge St.

Omaha, NE 68132

558-2233

[www.oh-kfastprint.net](http://www.oh-kfastprint.net)

Support local business!



**Yesterday's Best  
Thrift Shop**

36th and Leavenworth

342-3113

Business Hours

Wed., Thurs., Fri. 10 a.m. to 2 p.m.

Thurs. Evening 4 to 6:30 p.m.

Saturday 10 a.m. to 1 p.m.

[www.omaha.assistanceleague.org](http://www.omaha.assistanceleague.org)

First Central Congregational Church

**UNITED CHURCH OF CHRIST**

421 South 36<sup>th</sup> Street

Omaha, NE 6813

(402)345-1533

Fax: (402)345-6212

*No matter who you are, or where you are on life's journey, you are welcome here.*

## NEWS RELEASE

The sanctuary at First Central Congregational Church, United Church of Christ is now open Monday through Friday, from 11 a.m. to 1 p.m. for prayer and meditation. First Central invites you to take a break from the stresses of the day for a period of quiet contemplation.

### July 10 Anticipating Advent

It may seem early in the year, but our Staff will be meeting this month for Advent planning. In preparation, the *Worship Ministry* facilitate this forum for us to learn about the meaning and purpose of Advent, read upcoming lectionary texts together, and engage in some theological reflection. Will our conversation give rise to this year's Advent theme, the direction of worship, or other artistic or creative expressions to accompany worship? We'll see.

### July 17 George Washington and the American Revolution

George Washington was the American Revolution. Selected by the Continental Congress, he created an army and held it together with less than adequate support from the states. While he did not win many battles he avoided defeat by the strongest army in the world. Finally with the French alliance he defeated the British at Yoktowa and won the revolution. It is an inspiring story. Presented by *Kent Kirwan*, Professor Emeritus of Political Science and member of First Central.

### July 24 The Historical Jesus: Bart Ehrmann lectures

In these three sessions, Professor Bart Ehrman will concentrate on several topics related to Jesus' message and ministry. What can historians know about his miracles and healings? Did Jesus believe the Kingdom was already present or yet to come? Did his radical emphasis on the command to love lead him to violate the Scriptural demands for ritual purity, especially with regard to kosher food laws? And how did Jesus understand his last week in Jerusalem? Join us as we listen to Dr. Ehrman's lectures and discuss these important questions. *Deb Kirwan* will facilitate the sessions.



**V.F.W. St. Mihiel  
Post #247**

3302 Leavenworth  
(402) 344-0714

<http://www.vfw247.com/>

*Your neighborhood Veterans and Community Service Organization*

> Open to the public during food service <

**Tuesdays, 5:00 – 7:00PM  
Hamburger & Sandwich Night**

**Wednesdays, 5:00 – 7:00PM  
Hamburger & Sandwich Night**

**Thursdays, 5:00 – 7:00PM  
Tex - Mex Night**

**Fridays, 5:00 – 9:00PM  
Family Dinner Steak Night  
Sandy & Dave's Karaoke  
8:00PM – Midnight**



**Saturday, 6:00 – 10:00PM  
Texas Hold 'Em sandwiches & more**

**2nd Sundays, September – May  
Pancake Breakfast, 8 – Noon**

*Good Food – Great Prices – Family Friendly*

*Color It Clean, continued from Page 1*

John McCaul, Rachel Joos, Kathryn Rehmann, Scott Redd, Michael Cich-Jones, Bill Kline Bonnie Urbanek, Steve Choi, Reggie Welles and Greg Dyché. We even had a volunteer from Morton Meadows neighborhood stay to help out: thank you Pat Ryan for your time! If I forgot anyone let me know.

I did not have a count on the number of tires we grabbed out of the alleys, but there was at least two pick-up trucks full. And yard waste vouchers were also distributed to have that material mulched.

From past years, we always sent a number of small engine machines (lawn mowers, snow blowers) to the scrap yard. This year I lined up Metro Community College to receive what we could extract for use in their small engine repair classes. Due to the ambitious scrappers out there, I suspect, the amount of broken lawn mowers were non-existent! However, we did "donate" at least three snow blowers and hope they can become useful tools for the students.

Fashion Cleaners partner to provide a great spot for this event so be sure and thank them when you get your clothes dry cleaned.

With the help of many, including the Mayor for budgeting this event, we were able to color the neighborhood clean once again!!

For All Your Healthcare Needs

**We  
Care  
For You!**

Quality, Customer Service, Specialty Medical Products, at Great Prices

- Retail Pharmacy • Compounded Prescriptions
- Rental Medical Equipment • Oxygen & Nebulizers
- Wheelchairs & Walking Aids • Diabetes & Ostomy Supplies
- Wellness Center • Mobility & Rehab Equipment Center

**Kohll's  
Pharmacy & Homecare**

Seven locations to serve you. [www.kohills.com](http://www.kohills.com)

114th & Dodge - 408-0012 • 84th & Hwy. 370 - 331-8632  
29th & Leavenworth - 342-5886 • 3427 S. 84th - 393-1404  
43rd & L - 733-2000 • 172th & Q - 895-3101 • 5000 Dodge - 553-6294



**Dismantling Experts**

Office  
(402) 346-4470  
Fax  
(402) 346-2341  
2820 Vinton Street  
Omaha, NE 68105

**Architectural Salvage  
New & Used Lumber  
Rare Bricks  
Landscaping Materials  
Old House Parts  
Columns**

**Vintage Hardware  
Culverts  
Iron  
Pipe  
Heavy Equipment  
Furniture**

**We Buy and Sell Salvage and Real Estate**

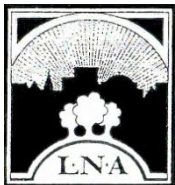


LEAVENWORTH NEIGHBORHOOD ASSOCIATION  
 3031 Leavenworth St.  
 Omaha, NE 68105

NON PROFIT ORG  
 US POSTAGE PAID  
 OMAHA, NE  
 PERMIT NO 447

June 2011

*"Celebrating together as friends and neighbors"*



## THE LEAVENWORTH NEIGHBORHOOD ASSOCIATION

### Who We Are

*A neighborhood association advocating growth and pride for families and business in the heart of the city -- working to provide a safe, attractive, and welcoming environment in which to live, work, and play. The LNA is a 501(c)3 nonprofit organization.*

### Our Board Members

President: Jim Thompson Phone: 342-4371  
 Email: zippijd@aol.com  
 Vice-President: Anne Meysenburg Phone: 707-3979  
 Email: anne@kentbellows.org  
 Secretary: John Costanzo Phone: 344-3867  
 Email: costanzoj@cox.net  
 Treasurer: Zach Johnson  
 Email: znj@mac.com  
 At Large: Phil Abraham Phone: 510-1045  
 Email: abesway101@aol.com

Join us for our monthly meetings -- the 3rd Thursday of the month, 7 p.m., V.F.W., 3302 Leavenworth St.

Website: [www.LNAomaha.org](http://www.LNAomaha.org)

### Become a Member of the LNA

Name: \_\_\_\_\_

Address: \_\_\_\_\_  
 \_\_\_\_\_

Phone: \_\_\_\_\_

E-mail: \_\_\_\_\_

Family membership: \$10 annually

Business membership: \$20 annually

Name of Business: \_\_\_\_\_

New Member

Renewal

Make checks payable to LNA. Dues are for Jan.-Dec.  
 Mail to LNA, 3031 Leavenworth St, Omaha, NE 68105.

Each adult 18 or older, 2 max. per family or business who pay dues and lives, owns property, or owns/operates a business in the LNA boundaries shall be eligible to vote on Association matters.

LNA boundaries: East - 29th St., North - Dodge St.,  
 South - Pacific St., West - 36th St.