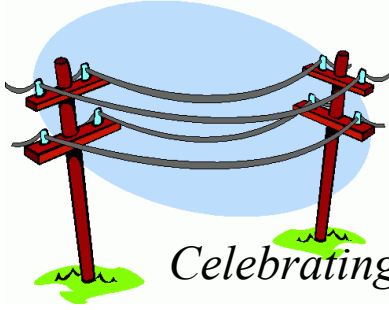


The

LEAVENWORTH

EXCHANGE



Celebrating together as friends and neighbors

Volume 25
Issue 6



June 2010

Guest Speaker June Meeting

– Melinda Pearson

Ms. Pearson is the Director, Parks, Recreation and Public Property Department for the City of Omaha. She is a recent appointee by Mayor Suttle, moving up from Lincoln to take the position. The LNA is a unique association in that we have three separate parks within our boundaries. And of course the Turner Boulevard Trail runs through our neighborhood and will ultimately connect with the entire trail system. These areas are under her direction. Please attend and hear what Omaha has in store for our parks and recreation.

Name That Garden

We have two garden areas that are referenced by the members as “the triangle garden” and “Mrs. Roberts”. Do you know where these are? If not, the first is on Turner Boulevard, where Jackson intersects 34th Street. The second is the green space next to the trail on the north side of Leavenworth Street, next to the former Mrs. Roberts Palm Reader building. And of course we have the original “Leavenworth Community Garden” on the St. Mary’s/Leavenworth intersect and the “Identity Garden” at Turner Boulevard and Harney Street. So, it is time to give these two some real names.

The space next to Mrs. Roberts has been suggested as “The Zodiac Garden”. Thoughts? And the other space – no ideas yet. Bring YOUR idea to the meeting and we will try and reach consensus on the names. Then we can get some signs. . And of course, we can all take turns cutting the grass at the gardens. Bill, John, Hawk can use some help. And THEN we can all enjoy the beauty!

All these garden spaces represent years of work by a number of dedicated volunteers. Thank you to all to contribute to generate these areas of pride in the neighborhood.

Mutual of Omaha Grant

By Carol Haas

Whoopee! We received grant funding from the Mutual of Omaha Neighborhood Grant program!

We will be working with the Kent Bellows Foundation students to have a mural painted on the fence at the “Hands to Harvest” Community Garden. This joint effort with the Ford Birthsite Neighborhood Association is located at 1113 S., 31st Street. This mural project will take place over the summer so updates will be forthcoming!

Stop by the garden later this summer to see the progress!

Reminder! The next LNA meeting will be **June 17, 2010, 7:00 PM** at the VFW at 3302 Leavenworth St (in the meeting hall on the lower level).

Enter on the south side main entrance facing Leavenworth OR on the north side to avoid using stairs. **Mark it down!**

Letter from the President....

Within the last month there have been a couple of significant events in our neighborhood. The Midtown Crossing ribbon cutting was held and a LOT of people showed up. I have never seen so many "suits" at an outside gathering in our neighborhood as I did in Turner Park. The program was simple, with entertainment and many, many kudos to Mutual of Omaha for the strength they showed in this major investment. Certainly it will be a treasure to witness the continuing unfolding of this project as residents move in and businesses begin. The second event was also at Turner Park and held on May 29. The newly created "Outdoor Market" showcased 35 booths from a typical farmers market to handmade creations by local artists. Plus live entertainment! We walked down to take it all in and look forward to more opportunities. Hours are 9:00 to 12:00 PM on Saturdays. Check it out.

And of course I discovered some old "events" just this week. Some nasty "SUR 13" graffiti slapped on a cement wall on 33rd and Leavenworth and on the brick building at 31st and Leavenworth has marred the neighborhood. It is ugly. With all the good things around the neighborhood, why do we have to tolerate these vandals? They need to be caught. They need a hard lesson on their mischief. My patience for these little #%*!#@&*# has about run out and it's time to take some action.

Jim Thompson

Information for Contributors

To contribute to *the Exchange*, please contact

Jim Thompson, zippijd@aol.com.

Deadline for the issue is

July 1, 2010.

Content submitted may be edited as needed.

Want to receive The Exchange by e-mail?

Simply send an email message to zippijd@aol.com and request that you'd like to start receiving the electronic version of the LNA newsletter. Each month, you will be sent a full color pdf version of the newsletter ahead of the print mailing.

LNA Events Calendar

Every Thursday: Yoga Classes

First Lutheran Church,

542 S. 31st St.

9-10 a.m., free-will offering.

All fitness levels welcome.

First Saturday of each Month:

Pick up litter on your morning walk. [Note to all: as you may realize, Omaha has changed their Civil Defense siren from 10:00 AM Saturdays to 10:00 AM Wednesdays. So when you start your walk on Saturdays the siren won't be there to remind you!!!]

Mayor's Grant at Work in the Neighborhood

By Carol Haas

With funding from the 2010 Mayor's grant, several beds of perennials have been planted at the Leavenworth Community Garden. Special thanks to Bill Kline who obtained the flowers. The selection included Rudbekia, Day Lilies, Liatris, Cone Flowers, and Cat Mint. Bill and Hawk Hicks also took time to plant these perennials at the garden.

We encourage all neighbors and even "drive-bys" to stop, get out of their car, and walk through the garden space on Leavenworth Street. The grass is lush, the flowers add a nice touch. And to use the old cliché, take time to smell them!

Additionally, grant money has been used for soil/compost for the Hands to Harvest Community Garden at 1113 S. 31st Street. As of Memorial Day weekend a number of beds had been constructed, rented, and planted by LNA and FBNA members as well as others.

Congratulations to all who have worked so diligently to complete the beds. Additionally, a great deal of effort was expended in terracing the entry-way to the garden and planting flowers. Rocks and plants for this area were donated by a FBNA resident who lives adjacent to the garden. **A celebration of the garden is planned for June 26 starting at 5:00 PM until 7:00 PM. Music and refreshments will be provided!! See you there!!**

Neighborhood Gardens- An Investment in America's Future

By Todd Wyatt

Community gardens, such as the recent one being developed by LNA and FBNA, provide an interesting opportunity to bring long-term security to our nation. This statement may at first seem a bit unusual, but given historical national responses to severe fuel shortages, it may be the perfect time for communities to develop food sustainability practices such as urban gardening. With the Gulf oil spill making recent headlines and reminding us of the importance that fossil fuels bring to our current lifestyle, we might take this opportunity to reflect upon the ways that other countries have responded to oil shortages in the past.

In response to its desperation for oil in 1941, Japan chose a militaristic solution by invading and taking oil from the East Indies. This of course led to dire consequences for the Japanese after initiating war against the United States. When the former Soviet Union ceased subsidizing authoritative dictatorships with oil supplies, North Korea experienced widespread starvation and shortages among the poor. Conversely in Cuba, despite similar oil shortages under an authoritative regime, no mass starvation took place. One analysis of these different outcomes is that the social fabric of Cuba provided for more community solidarity in areas of urban agriculture and a spirit of self-help among neighbors. Simply stated, Cubans knew how to grow their own food because they had preserved knowledge and skill of traditional agriculture, even among urban dwellers.

Here in the US, we should likely ask how many of us have traditional knowledge in fundamental agriculture after experiencing so many generations of individualism and affluence. While no one is in agreement as to the exact date of peak world oil production, rational people understand that fossil fuels are not renewable once they are used. Whether oil shortages impact our ability to sustain our current individual lifestyles or not, our own human metabolism requires that we eat to survive. Teaching both children and adults about where our food comes from and how to grow your own food would most certainly provide security for our nation in the event that we are called upon to rely on each other in a community spirit of self-help.

Mentoring Opportunity

By Howard Dotson



Westminster Presbyterian Church is partnering with the Latino Police Officers Association to sponsor a soccer team for our Park Ave youth. The ages for this team will be 9 to 12 years old.

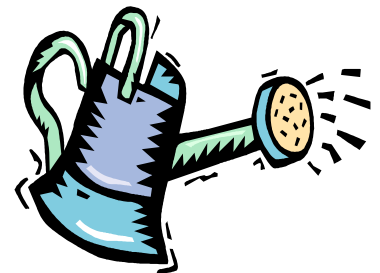
Our first practice is Tuesday June 8th, 5:00 PM at Leavenworth Park. Our games will be on Friday night at 7:00 PM. Venue TBD. If you would like to volunteer, mentor and cheer on our youth, please call (402)345-5423.

Omission on the thank you's for the clean-up: Andy Wetjen of IBT Inc. donated the gloves for the volunteers. Andy is their Safety Product Specialist so if your company needs any personal safety items call him at (402) 592-2626.

New Garden Box!!

A special "THANK YOU" to Cecelia Light for donating the new box at the Community Garden. For quite some time Fred Nielson stored his tools and bags in cardboard boxes. This proved not only unsightly, but the weather took its toll on the yard waste bags.

This heavy duty box has been bolted down by Jim Thompson so hopefully it will stay put.



Fred says, "Fantastic".

From our neighbors at Midtown Crossing.....

Jazz on The Green at a Glance:

What is Jazz on the Green?

Jazz on the Green is Omaha's popular outdoor concert series, a summer tradition dating back to 1985. For years, it was held on the lawn of the Joslyn Art Museum. Starting this summer, we're excited to bring this popular event to a revitalized and expanded Turner Park.

Why the Switch from Joslyn Art Museum to Turner Park?

Omaha Performing Arts announced, in January, that it would adopt the concert series from Joslyn Art Museum, a move designed to expand the event's reach in the community. Now, in partnership with Midtown Crossing and with sponsorship from Blue Cross Blue Shield of Nebraska, Mutual of Omaha and Omaha Steaks, Jazz on the Green has found a larger, centrally located home in Turner Park. This change of venue ensures the future of the Omaha favorite while enhancing the audience experience.

When Does It Start?

The series begins Thursday, July 8, the first Thursday after the Fourth of July, and occurs every Thursday thereafter through August 12. Complete series details with dates and performers will be announced later this spring. Go to Omaha Performing Arts for more information (Use this link: <http://www.omahaperformingarts.org/series/details.aspx?ID=18>)

Is Admission Still Free?

Absolutely!

When is Turner Park open for seating?

Seating in the center bowl of Turner Park, the circular area with a direct view of the stage, will be permitted beginning at 5 PM. The green spaces outside the bowl will be available before 5 PM on the day of the concert.

Can I Still Bring My Own Refreshments?

You know it! Bring your own picnic or take advantage of our nearby restaurants who will be selling some mouth-watering options. And feel free to bring your own beverage (only beer, wine and champagne are permitted on the grounds of Turner Park). Revel in the experience of good food and outstanding, live entertainment in a beautiful, outdoor setting. It simply doesn't get any better than this.

What Can't I Bring?

We asked that you **not** bring/use:

- Tents. (They affect the site lines of other guests.)
- Plastic tarps. (They ruin the lawn.) Only breathable blankets, please.
- Stakes (They present a tripping hazard.)
- Open flames (i.e. no hibachis and citronella candles).
- Hard liquor (only beer, wine and champagne is allowed in Turner Park)

What About Parking?

Ample, conveniently located parking will be available. Midtown Crossing has two public parking garages. They are accessible from 33rd, Farnam and Harney Streets. Both garages offer free parking for the first three hours and \$1 each hour thereafter (with a maximum fee of \$6). Short-term (max. 2 hours) metered parking is available on Farnam Street and within Turner Park, accessible from 31st Avenue. Metered parking is monitored Mon-Sat from 8am-6pm.



**OMAHA
Farmers
MARKET**

COME TO THE MARKET

Every Saturday Morning
May 1 - October 9, 2010
8:00 am - 12:30 pm

★ In the Old Market ★

omahafarmersmarket.com
become a fan 

PRESENTED BY:   MEDIA PARTNER: 

SPONSORED BY: HyVee, Downtown Omaha Improvement District, Old Omaha Assoc., Security National Bank, The Reader

Habitat for Humanity Project

A group of South Omaha churches are coming together to build a Habitat for Humanity house at 2100 Poppleton. The churches include Central Presbyterian, First Central Congregational, First Presbyterian, Grace Lutheran, Pella Lutheran, and Hanscom Park United Methodist. Work on the project will begin on June 19th. If you are interested in volunteering your time and talents, please contact Fred at oldbbplayer@msn.com.

From the Midtown Neighborhood Alliance...

Commendation & Congrats should be extended to the five members of MNA who successfully applied and received funding from the 2010 Mayor's Grant process. Let it be noted that today, May 19 2010, the Midtown Neighborhood Alliance recognizes the following neighborhood Associations for their continued commitment to making their neighborhood stronger through service and vision: Ford Birthsite, Gifford Park, Leavenworth, Morton Meadows and Park East are great examples for Midtown and the rest of Omaha.



Need a Recycling Bin?

Now that the city will not deliver, we have a limited quantity available for distribution. Call Jim at 342-4371. Recycling is really easy to do. Plastic containers marked 1,2,3, & 5, newspapers, magazines, cereal boxes, junk mail, tin/aluminum cans can all be taken out of your trash and dropped in your bin. For details visit www.wasteline.org

UNITED CHURCH OF CHRIST

First Central Congregational Church

21 South 36th Street

Omaha, NE 68131 (402) 345-1533

No matter who you are, or where you are on life's journey, you are welcome here.

Contact Sara Sharpe (sara@firstcentral.org)

These Open Forums are free and open to the public at 9:10 a.m. on the dates noted.

July 11: Evergreen Thrift Shop; The Building of a Community: *presented by Sam Pfeifer and Company* When Evergreen opened almost 10 years ago our objective was only to generate some income for First Central. It has turned into much more than that. Come hear our volunteers talk about people we serve, friends we have made, and the many side benefits of the Thrift Shop.

July 18: Ethical Wills: Preserving Your Legacy of Values: *presented by Shane Kotok* An ethical will is an ancient Hebrew tradition that is still practiced today by people of all faiths, who wish to pass their values on to future generations. Ethical wills are a way to hand down blessings, life lessons, hopes and dreams for the future, love and forgiveness to family, friends and community. Learn what an ethical will is, and how to write your own. Shane Kotok is the Director of Admissions and Community Outreach at the Rose Blumkin Jewish Home.

July 25: No One Dies Alone: Sitting Vigil with the Dying *presented by Sr. Marie Micheletto* We have a very mobile and fragmented society. We are living longer. Some people find themselves miles away from friends and family. More and more, people are dying without a "companion" for this journey. No one Dies Alone is a program for Hospitals, Parishes and Congregations who believe that no one should have to die alone. Marie Micheletto is a Sister of Mercy of the Americas. She is a psychotherapist and project person for Alegent Hospice and Home Health.

•Purchase •Refinance •Debt Consolidation



Al Rotella
President
Cell: 402-618-0767
Email: al@rotellamortgage.com
www.rotellamortgage.com

Commercial Loans
Investment Property
Home Equity Loans
100% Financing

7581 Main Street
Ralston, NE 68127
Office: (402)339-4426
Fax: (402)597-2846

•VA •Jumbo •Conventional •Subprime

To print our monthly newsletter,
the Leavenworth Neighborhood Association
proudly uses

OH-K FAST PRINT

located at
4604 Dodge St.
Omaha, NE 68132
558-2233

www.oh-kfastprint.net
Support local business!



**EXPERT PLUMBING SERVICE
FOR OVER 60 YEARS**

CENTRAL 341-0450 MILLARD 333-1869 EMERGENCY 306-9232

Alderman's Bar

**60+ Years
Family Owned Business
"Where Friendly People Meet"**

3216 Leavenworth 341-5190



Yesterday's Best Thrift Shop

36th and Leavenworth
342-3113

Business Hours

Wed., Thurs., Fri. 10 a.m. to 2 p.m.

Thurs. Evening 4 to 6:30 p.m.

Saturday 10 a.m. to 1 p.m.

www.omaha.assistanceleague.org



ALL YOUR AWNING AND CANVAS NEEDS

FLAG, ZIPPER, TENT AND BOAT COVER REPAIRS

NICKI CALLAN
VICE PRESIDENT
345-7224

3305 LEAVENWORTH ST
OMAHA, NE 68105

WWW.JORGENSENAWNINGS.COM



Tim Reeder 612-3833
treeder@npdodge.com

Omaha's Old House Specialist!
Since 1998 Tim Reeder has helped
hundreds of people like you buy and
sell their great old homes. Backed by
NPDodge Real Estate, the areas oldest
and best real estate firm, Tim Reeder
& the good life group have the
experience, knowledge and tools to get
the job done right the first time.



Dismantling Experts

Office
(402) 346-4470
Fax
(402) 346-2341
2820 Vinton Street
Omaha, NE 68105

Architectural Salvage
New & Used Lumber
Rare Bricks
Landscaping Materials
Old House Parts
Columns

Vintage Hardware
Culverts
Iron
Pipe
Heavy Equipment
Furniture

We Buy and Sell Salvage and Real Estate



V.F.W. St. Mihiel

Post #247

3302 Leavenworth

(402) 344-0714

<http://www.vfw247.com/>

Your neighborhood Veterans and Community Service Organization

> Open to the Public during Food Service <

**Tuesdays, 5:00 – 7:00PM
Hamburger & Sandwich Night**

**Wednesdays, 5:00 – 7:00PM
Italian Night**

**Thursdays, 5:00 – 7:00PM
Mexican Night**

**Fridays, 5:00 – 9:00PM
Family Dinner Night**

**Sandy & Dave's Karaoke
8:00PM – Midnight**

**Saturday, 6:00 – 10:00PM
Texas Hold 'Em sandwiches & more**

**2nd Sundays, September – May
Pancake Breakfast, 8 – Noon**

Good Food – Great Prices – Family Friendly



Fred's Friendly Service

*Your Downtown
Full Service Station
29th & Leavenworth St
342-9519
Finish Line*

**First Lutheran Church 542 So. 31 Street
345-7506 Dial-a-Meditation 345-1555**

firstlutheranomaha.org

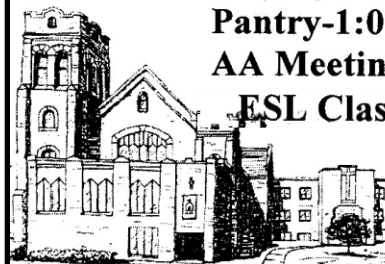
Worship-Sunday 8:30 am and 11:00 am

Sunday School- 9:45 am

Pantry-1:00-2:30 Mon.-Fri.

AA Meetings-7:00 pm Mon.

ESL Classes-9:00 am Tu.& Th.



*Building a Neighborhood
for Christ*



Running Club?
By Scott Hennarty

With the weather so nice and the proximity of the trail so close, is anyone interested in setting up a time for some jogging? Let's talk about it at the meeting on June 17.



Kiewit Plaza Barber Shop

**Stan Dosekal
Master Barber**

**By Appointment
271-2868**

**3555 Farnam St # 31
Omaha, NE 68131**

For All Your Healthcare Needs

We Care For You!

Quality, Customer Service, Specialty Medical Products, at Great Prices

Retail Pharmacy • Compounded Prescriptions

Rental Medical Equipment • Oxygen & Nebulizers

Wheelchairs & Walking Aids • Diabetes & Ostomy Supplies

Wellness Center • Mobility & Rehab Equipment Center

Kohll's Pharmacy & Homecare

Seven locations to serve you. www.kohlls.com

114th & Dodge - 408-0012 • 84th & Hwy. 370 - 331-8632
29th & Leavenworth - 342-5886 • 3427 S. 84th - 393-1404
43rd & L - 733-2000 • 172th & Q - 895-3101 • 5000 Dodge - 553-6294



LEAVENWORTH NEIGHBORHOOD ASSOCIATION
 PO Box 55193
 Omaha, NE 68155

NON PROFIT ORG
 US POSTAGE PAID
 OMAHA, NE
 PERMIT NO 447

Celebrating together as friends and neighbors



THE LEAVENWORTH NEIGHBORHOOD ASSOCIATION

Who We Are

A neighborhood association advocating growth and pride for families and business in the heart of the city -- working to provide a safe, attractive, and welcoming environment in which to live, work, and play. The LNA is a 501(c)3 nonprofit organization.

Our Board Members

President: Jim Thompson Phone: 342-4371
 Email: zippijd@aol.com
 Vice-President: Anne Meysenberg Phone: 707-3979
 Email: anne@kentbellows.org
 Secretary: John Costanzo Phone: 344-3867
 Email: costanzoj@cox.net
 Treasurer: Zach Johnson
 Email: znj@mac.com
 At Large: Phil Abraham Phone: 510-1045
 Email: abesway101@aol.com

Join us for our monthly meetings -- the 3rd Thursday of the month, 7 p.m., V.F.W., 3302 Leavenworth St.

Website: www.LNAomaha.org

Become a Member of the LNA

Name: _____

Address: _____

Phone: _____

E-mail: _____

Family membership: \$10 annually

Business membership: \$20 annually

Name of Business: _____

New Member

Renewal

Make checks payable to LNA. Dues are for Jan.-Dec.

Mail to LNA, PO Box 55193, Omaha, NE 68155.

Each adult 18 or older, 2 max. per family or business who pay dues and lives, owns property, or owns/operates a business in the LNA boundaries shall be eligible to vote on Association matters.

LNA boundaries: East - 29th St., North - Dodge St.,
 South - Pacific St., West - 36th St.