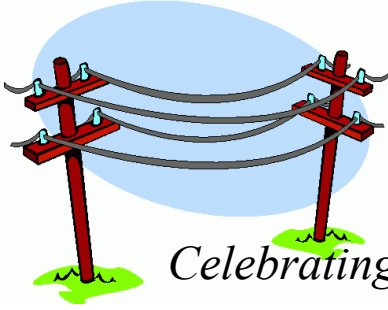


The

# LEAVENWORTH

# EXCHANGE



*Celebrating together as friends and neighbors*

Volume 25  
Issue 1



January 2010

## Letter from the President.....

Let's starting counting....one, two months before the official day of spring. We can make it! All this white stuff will be gone, right? NOT! I think it is safe to say that we will have winter piles at each intersection. And a newly created glacier at the switchback on Turner Blvd. Being born and raised in Minnesota, I can honestly say that I am tired of how the city experiments each year with snow removal. Sure, this year seems to be the exception. But universal rules can apply whether there are 4 or 12 inches of snow arriving. One very obvious tool the city needs to employ is a snow emergency. This can assure that the main streets are drivable. Another simple tool is to remove the "snowbirds". These are the vehicles that are abandoned on the streets and covered with snow. If they are not operable, they need to be towed away or at a minimum the owner should be responsible for clearing ALL the snow around the vehicle. If you have other ideas, let's talk about them at the meeting and we can let the mayor know is best for this midtown neighborhood.

And I trust the weather will be just fine for you to come to our first 2010 meeting on the 21<sup>st</sup>. Two important items will need to be addressed: the budget and our goals. Tentative goals were outlined in the last issue of the Exchange so bring your thoughts so we can gear up. Also, the budget has been drafted at the last Board meeting. I believe it is a modest proposal, but will also depend on increased membership to help sustain our activities. This is the time for all of you to provide some input for the association from a both a financial and activity standpoint. From discussions with many of you through the years, there are tons of "why don't we do this?" and "shouldn't be buy that?" ideas. Be there, let's talk.

Jim Thompson

## Board Vacancy

Jeff Shannon has resigned from the LNA Board and we will need to replace him with a special election at the general membership meeting in January. The term would be for one year to fulfill the balance of his term.

Nominations will be taken at the meeting, so if you or anyone you know are interested, please attend. We wish Jeff well as he attends to other things in his life and hope that he continues to engage the neighborhood with his input and ideas.

## Newly Elected LNA Positions

Results of the November elections at the monthly LNA meeting are as follows:

President—Jim Thompson  
Vice-President—Anne Meysenberg  
Treasurer—  
Secretary—John Costanzo  
At Large—Ruth Spurgin

**Reminder!** The next LNA meeting will be January 21, 2010, 7pm, at the V.F.W., located at 3302 Leavenworth St (in the meeting hall on the lower level). Enter on the south side main entrance facing Leavenworth OR on the north side to avoid using stairs. **All in attendance will be eligible for a door prize!!**

## LNA Goals for 2010

By Jim Thompson

It was reported in last month's Exchange that the Board outlined some goals for the membership for 2010. These are worth repeating so all of you can bring your ideas or expand on these. We have continuing programs such as the spring clean-up, neighborhood watch, garden maintenance, etc. However the following goals are truly an opportunity for our group to pitch in to improve our neighborhood. In no particular order:

- + Increase membership. Family = 150; Business = 50.
- + Collect EXCHANGE advertising revenue.
- + Increase Public Relations with the Omaha World Herald Community Connections.
- + Apply for a garden planting grant.
- + Increase the size of the "stairwell wall".
- + Create another public mural.
- + Obliterate graffiti on all utility boxes.
- + Encourage Metro Area Transit to maintain their bus stops.
- + Conduct another "Brush Down" at Dewey Park.

These are certainly not all inclusive of what needs to be done in our neighborhood, but certainly provides a good start. And yes, accomplishing any of these requires a few volunteer hours from a lot of neighbors. But it is worth it!!!

Kelly Boswell and Molly Zimmer thank all who contributed articles and photos for the *LNA Exchange* during 2009.

Please continue to support Ruth Spurgin in 2010 as she takes over this important job.

### Information for Contributors

To contribute to *the Exchange*, please contact

**Ruth Spurgin** at [peekatchyoo@aol.com](mailto:peekatchyoo@aol.com).

Or **Jim Thompson** at [zippijd@aol.com](mailto:zippijd@aol.com)

Deadline for the February issue is

**February 4, 2010.**

Content submitted may be edited as needed.

### Want to receive The Exchange by e-mail?

Simply send an email message to [peekatchyoo@aol.com](mailto:peekatchyoo@aol.com) and request that you'd like to start receiving the electronic version of the LNA newsletter. Each month, you will be sent a full color pdf version of the newsletter ahead of the print mailing.

## LNA Events Calendar

**Every Monday and Wednesday:** LNA Walking Club, 9 a.m.. North Entrance of Jackson Elementary. Call Irene Perez for information at 541-6374.

**Every Thursday:** Yoga Classes  
First Lutheran Church,  
542 S. 31<sup>st</sup> St.  
9-10 a.m., free-will offering.  
All fitness levels welcome.

**1/24 :**First Central Congregational Church,

**Wild Diversity from the Okavango to the Kalahari,**  
*presented by Rick Brenneman, geneticist at Henry Doorly Zoo*

*In the farmlands and urban areas of the Midwest, aside from the migratory seasons, we often miss the extensive wildlife diversity that God has created, is still creating, and that exists in pristine ecosystems. I will take you into my photo journal for a glimpse of my expedition to Botswana to see within species and between species interactions, and some of the overall abundance of God's diversity that I was honored to be a part of. Please join us, and appreciate with me some of what is still left of, and why we must protect, these habitats in the remote regions of our planet .*

Corner of 36th & Harney Sts., **9:10am start**

Contact: Sara Sharpe, 345-1533

**1/31, continuing into February:**First Central Congregational Church,  
**A National Issues Forum: The Energy Problem,**  
*presented by John Schalles, Professor of Biology at Creighton and Kent Kirwan, Professor Emeritus, Political Science at UNO*

*In the first class (January 31) we examine the problem, which has many dimensions. The second class (February 7) concerns reducing our dependence on foreign energy. The third class (February 14) focuses on getting out of the fossil-fuel predicament. Fossil fuel generates carbon dioxide, which causes global warming. Our last class (February 21) explores ways to curb our energy appetite and to use energy more efficiently .*

Corner of 36th & Harney Sts., **9:10 am start**

Contact: Sara Sharpe, 345-1533

## Volunteer Income Tax Assistance (VITA)

Perhaps you may have heard of this initiative. This program is designed for the elderly or others who can use this service. There are two locations in our area where this free tax service is provided:

- Campfire USA, 2566 St. Mary's Ave, Monday 2:00 PM – 6:00 PM; Wednesday 10:00 AM – 2:00 PM
- International Center of the Heartland, Center Mall Suite 402, by Appointment only 536-3522

To find other locations in the Omaha metropolitan area call 2-1-1. If you need this service, be prepared to bring all necessary financial documents with you for the appointment.

## Green Initiatives

By Jim Thompson

The Midtown Neighborhood Alliance has created a subcommittee to look at what can be done in regards to recycling and other “geen” issues. This task is certainly representative of what each neighborhood association can or should do in this regard. Last year we established a goal of getting all households in our boundaries to utilize a green bin. This could be a natural for the entire MNA. Also, since the drop off container for recyclables was pulled from behind the UNMC fitness center, it is felt a new location in Midtown needs to be established. What about glass? Is there an incentive to get bar owners involved to not only reduce their hauling fees, but to find a way to recycle this commodity? Keep in mind that due to market conditions, i.e., major expenses for collecting glass, we are no longer able to put glass in green bins. Also, glass containers would break and contaminate the rest of the commodities. But if there was a single dumpster just for glass, would neighbors contribute? Any other ideas? Let Jim Thompson know so he can feed the information through this committee.

From the Board Meeting and for General Membership discussion/approval.....

### **Budget Expenses 2010 discussed**

-Garden. . . . .	\$400	
-Membership. . . . .	\$225	
Chili Feed	\$50	
Ice Cream Social	\$75	
Picnic	\$100	
-Clean up. . . . .	\$250	
Tee shirts	\$200	-
Gloves	\$50	
-Newsletter. . . . .	\$1500	
-Christmas Cheer. . . . .	\$250	
-Miscellaneous. . . . .	\$330	
Office Supplies	\$50	
Postage	\$200	
Dues	\$50	
License	\$30	
<b>TOTAL EXPENSES</b>	<b>\$2705.00</b>	

### **Projected Income 2010 discussed**

-Active Members . . . . .	\$540
34 Families	\$340
10 Business	\$200
-Newsletter Advertisements	\$1530
- Donations (Christmas Cheer)	\$2000
<b>TOTAL INCOME</b>	<b>\$4070</b>

## Another successful Christmas Cheer Program

By Carol Haas

Thanks to all who participated in the 2009 Christmas Cheer Program. Special thanks to Molly Zimmer, Angie Lewis, Camp Fire, and Jackson staff who helped assemble and deliver the gift bags at Jackson Elementary on Friday, December 18. We had everything done, delivered, and cleaned up by 11:00 a.m.

Donations from 45 friends and members of the LNA totaled \$2,110.00 and we also received gloves, scarves, etc., from the women’s society at St. John’s Church and toothbrushes from constituents of Senator Gwen Howard. Expenses for the 2009 project included \$49.00 for mailing supplies and \$1,778.00 for gift items. Additional expenses will be postage for mailing of thank you letters. The majority of items for the program were purchased at our neighborhood Walgreen’s and Trish Ruffino, Store Manager, was great help with this project. Special thanks also to Terry McMullen of Cargo Zone who delivered our books to Jackson the day before we assembled the gift bags. And, finally, this project’s success is in large part the result of the commitment of Ann Lawless and her great organizational skills. Ann does a fabulous job and we are fortunate to have her serve on this committee year after year.

Also, each year, we send a monetary gift to Fred Nielsen to thank him in a small way for all the work he does at the Leavenworth Garden. Without Fred’s dedication to his “garden of weedin”, we would all have to work much harder to maintain this garden. Thank you, Fred, and all the best in 2010!

## General Membership Meeting

January 21, 2010

### Tentative Agenda

- Goals for 2010
- Budget Approval
- Liquor applications- Walgreens
- Write-off of Accounts Receivable (Exchange Advertising)
- LNA “Branding”
- Snow Removal in Midtown
- Special Election Board Vacancy

## Neighborhood Builders 2010

From Ron Abdouch, Executive Director, The Neighborhood Center

Neighborhood Builders is a community effort led by the Neighborhood Center, The University of Nebraska at Omaha, the City of Omaha, the City of Council Bluffs, Omaha By Design, neighborhood associations, businesses, foundations, and private citizens. The goal of Neighborhood Builders is to help build stronger, healthier neighborhoods in Douglas, Sarpy and Pottawattamie counties by assisting in developing positive leadership.

Anyone interested in making neighborhoods safe places in which to live, work and raise families should participate. **Anyone may participate.** It is highly recommended that new association board members and/or leaders attend. Whether your association is new, just a thought or well established, there is useful information presented at Neighborhood Builders to share with your membership. You may choose to attend as an individual or as part of a team.

Neighborhood Builders will have different workshops each Saturday.

**February 6,13, 20, and 27**

**Continental Breakfast/Networking: 8:00 a.m.**

**Topic/s of the day: 8:30 a.m.**

**All sessions will end by 12 noon.**

Community leaders, educators, business persons, and your neighbors will facilitate the session blocks. We promise sessions will be interesting and interactive. Our goal is to make these topics useful to you in everyday life. Your newly acquired skills will help at work, home and in your neighborhood community.

Topic Blocks will include:

- Leadership Development (2/6/10)**
- Neighborhood 101 (2/13/10)**
- Neighborhood Advocacy (2/20/10)**
- Neighborhood Mediation/Open House/Graduation (2/27/10)**

The 2010 edition of Neighborhood Builders will be held at the:  
**The Neighborhood Center**  
**115 South 49th Ave**  
**Omaha, NE**

## Registration Form

(Please print or Type)

Name: \_\_\_\_\_  
 Home Address \_\_\_\_\_  
 City, State, Zip \_\_\_\_\_  
 Telephone: Day \_\_\_\_\_ Evening \_\_\_\_\_  
 E-Mail \_\_\_\_\_

Name of your Neighborhood \_\_\_\_\_

How long have you lived in the neighborhood? \_\_\_\_\_

Community Involvement and/or interests \_\_\_\_\_  
 \_\_\_\_\_

What is the major issue in your neighborhood? \_\_\_\_\_  
 \_\_\_\_\_

Why do you wish to participate in Neighborhood Builders?  
 \_\_\_\_\_  
 \_\_\_\_\_  
 \_\_\_\_\_  
 \_\_\_\_\_

**Registration deadline is Friday, January 22, 2010.**

Please clip and return this form to Neighborhood Builders,  
 115 South 49th Ave, Omaha, NE 68132  
 Or fax to 402.561.7599

**Better  
 Neighborhoods Are  
 Built By You!**

## Committee Members

At one of the meetings this past year a sign-up sheet was established to identify those volunteers who enjoy one or more activities within the LNA. These subcommittees are always open for increased participation and everyone is, of course, welcome to contribute in whatever way they determine. Your reward will be paid in "Pride Points" of doing a good job for our neighborhood!

### Parks and Green Initiatives

Carol Haas  
Cindy Mitchell  
\*Jim Thompson  
Zach Johnson  
Bill Kline

### Social Committee

John Costanzo  
\*Cindy Mitchell  
Ruth Spurgin  
Dino  
Jack Manzer

### Neighborhood Watch and Drive Patrol

\*Chester Thomas  
Ruth Spurgin  
Jim Jennings

### Membership and Branding

Anne Meysenberg  
\*Zach Johnson  
Cal Gray  
Bill Kline  
Jim Thompson  
Ryan McGrane  
Molly Zimmer

### Jackson School

Ann Lawless  
Carol Haas  
\*Stephanie Ahlschwede  
Kersten Higgins

\*denotes chairperson

The LNA is also associated with the Midtown Neighborhood Alliance and Steve Cross, 342-3549, is representing our group on that board. This group meets the third Wednesday of each month at the Neighborhood Center. The South Omaha Neighborhood Alliance is represented by Carol Haas, 345-6085. They normally meet the first Monday of each month at the S.E. Police Precinct.

Please note that the above committees are not exclusive of members, ideas and challenges. If you have something you want to get involved with, please let any of these folks know!

## 10 Years Ago.....

### Highlights from Volume 16, Issue No. 1:

- President: Karen Svoboda; V.P.: Steve Cross; Secretary: Carol Haas; Treasurer: Ann Hobbs; At-Large: Cheryl Cisar.
- Goals for 2000: House numbers affixed throughout neighborhood, Expand boundaries of LNA, Light up Leavenworth St. at Christmas, Greater involvement with Jackson School children in garden activities, Neighborhood Watch on every block, Start fund raising for permanent home for LNA.
- Christmas Cheer provided groceries, clothing, gifts to five families. Margaret Pappas and family baked cookies, bread, and candy for the families.
- Congratulatory letter from Mayor Hal Daub on awards from the Urban Community Improvement Program, our Safe Play Club/After School Program, community garden and flagpole, bicycle donation to OPD, Christmas Cheer baskets. "...grateful to see this level of involvement".

•Purchase •Refinance •Debt Consolidation




**Al Rotella**  
 President  
 Cell: 402-618-0767  
 Email: al@rotellamortgage.com  
 www.rotellamortgage.com

7581 Main Street  
 Ralston, NE 68127  
 Office: (402)339-4426  
 Fax: (402)597-2846

Commercial Loans  
 Investment Property  
 Home Equity Loans  
 100% Financing

•VA •Jumbo •Conventional •Subprime



**EXPERT PLUMBING SERVICE  
 FOR OVER 60 YEARS**

CENTRAL 341-0450      MILLARD 333-1869      EMERGENCY 306-9232

To print our monthly newsletter,  
 the Leavenworth Neighborhood Association  
 proudly uses  
**OH-K FAST PRINT**  
 located at  
 4604 Dodge St.  
 Omaha, NE 68132  
 558-2233  
 www.oh-kfastprint.net  
 Support local business!

**Alderman's Bar**

**60+ Years  
 Family Owned Business  
 "Where Friendly People Meet"**

**3216 Leavenworth      341-5190**



**Yesterday's Best  
 Thrift Shop**  
 36th and Leavenworth  
 342-3113  
 Business Hours  
 Wed., Thurs., Fri. 10 a.m. to 2 p.m.  
 Thurs. Evening 4 to 6:30 p.m.  
 Saturday 10 a.m. to 1 p.m.  
 www.omaha.assistanceleague.org



**ALL YOUR AWNING AND CANVAS NEEDS**

FLAG, ZIPPER, TENT AND BOAT COVER REPAIRS

NICKI CALLAN VICE PRESIDENT 345-7224      3305 LEAVENWORTH ST OMAHA, NE 68105  
 WWW.JORGENSENAWNINGS.COM



**Omaha's Old House Specialist!**  
 Since 1998 Tim Reeder has helped hundreds of people like you buy and sell their great old homes. Backed by NP Dodge Real Estate, the areas oldest and best real estate firm, Tim Reeder & the good life group have the experience, knowledge and tools to get the job done right the first time.

Tim Reeder 612-3833  
 treeder@npdodge.com





**Dismantling Experts**  
 Office (402) 346-4470  
 Fax (402) 346-2341  
 2820 Vinton Street  
 Omaha, NE 68105

**Architectural Salvage**  
 New & Used Lumber  
 Rare Bricks  
 Landscaping Materials  
 Old House Parts  
 Columns

**Vintage Hardware**  
 Culverts  
 Iron  
 Pipe  
 Heavy Equipment  
 Furniture

**We Buy and Sell Salvage and Real Estate**



### V.F.W. St. Mihiel Post #247

3302 Leavenworth  
(402) 344-0714

<http://www.vfw247.com/>

*Your neighborhood Veterans and Community Service Organization*

- **Open to the Public during Food Service •**

**Tuesdays, 5:00 – 7:00PM**

**Hamburger & Sandwich Night**

**Wednesdays, 5:00 – 7:00PM**

**Italian Night**

**Texas Hold 'Em – 7:00 – 10:00PM**

**Thursdays, 5:00 – 7:00PM**

**Mexican Night**

**Fridays, 5:00 – 7:00PM**

**Family Dinner Night**

**Saturday, 6:00 – 10:00PM**

**Texas Hold 'Em sandwiches & more**

**2nd Sundays, September – May**

**Pancake Breakfast, 8 – Noon**

**4th Sundays, September – May**

**AMVETS Eggs & More Breakfast, 8 – Noon**

*Good Food – Great Prices – Family Friendly*



**FRED'S FRIENDLY SERVICE**  
*Your Downtown Full Service Station*  
 29TH & LEAVENWORTH ST  
 342-9519  
 FINISH LINE

**First Lutheran Church 542 So. 31 Street**  
345-7506 **Dial-a-Meditation 345-1555**

[firstlutheranomaha.org](http://firstlutheranomaha.org)

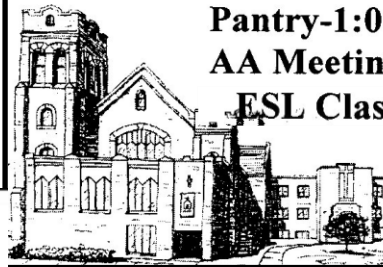
**Worship-Sunday 8:30 am and 11:00 am**

**Sunday School- 9:45 am**

**Pantry-1:00-2:30 Mon.-Fri.**

**AA Meetings-7:00 pm Mon.**

**ESL Classes-9:00 am Tu.& Th.**



*Building a Neighborhood for Christ*



### The Blue Flamingo Thrift

Your home for Fair Trade Gifts! Also  
Hosting Arts, Literature, & Yoga Events  
Year-round! Visit: [www.blueflamingo.org](http://www.blueflamingo.org)

Store Hours: Tues-Fri 12pm - 4pm / Sat.  
10am - 4pm

1716 So. 10th Street Question's please call:  
1 block South of Cascio's (402) 964-2740

**Kiewit Plaza Barber Shop**

**Stan Dosekal**  
Master Barber

**By Appointment**  
271-2868

**3555 Farnam St # 31**  
**Omaha, NE 68131**

*For All Your Healthcare Needs*

**We Care For You!** Quality, Customer Service, Specialty Medical Products, at Great Prices

Retail Pharmacy • Compounded Prescriptions  
 Rental Medical Equipment • Oxygen & Nebulizers  
 Wheelchairs & Walking Aids • Diabetes & Ostomy Supplies  
 Wellness Center • Mobility & Rehab Equipment Center

**Kohl's**  
Pharmacy & Homecare  
 Seven locations to serve you. [www.kohls.com](http://www.kohls.com)

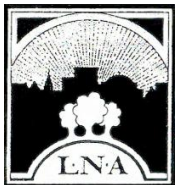
114th & Dodge - 408-0012 • 84th & Hwy. 370 - 331-8632  
 29th & Leavenworth - 342-5886 • 3427 S. 84th - 393-1404  
 43rd & L - 733-2000 • 172th & Q - 895-3101 • 5000 Dodge - 553-6294



LEAVENWORTH NEIGHBORHOOD ASSOCIATION  
 PO Box 55193  
 Omaha, NE 68155

NON PROFIT ORG  
 US POSTAGE PAID  
 OMAHA, NE  
 PERMIT NO 447

Celebrating together as friends and neighbors



## THE LEAVENWORTH NEIGHBORHOOD ASSOCIATION

### Who We Are

*A neighborhood association advocating growth and pride for families and business in the heart of the city -- working to provide a safe, attractive, and welcoming environment in which to live, work, and play. The LNA is a 501(c)3 nonprofit organization.*

### Our Board Members

President: Jim Thompson Phone: 342-4371  
 Email: zippijd@aol.com  
 Vice-President: Anne Meysenberg Phone: 707-3979  
 Email: anne@kentbellows.org  
 Secretary: John Costanzo Phone: 344-3867  
 Email: costanzoj@cox.net  
 Treasurer: Phone:  
 Email:  
 At Large: Ruth Spurgin Phone: 960-7817  
 Email: peekatchyoo@aol.com

Join us for our monthly meetings -- the 3rd Thursday of the month, 7 p.m., V.F.W., 3302 Leavenworth St.  
 Website: [www.LNAOmaha.org](http://www.LNAOmaha.org)

### Become a Member of the LNA

Name: \_\_\_\_\_

Address: \_\_\_\_\_  
 \_\_\_\_\_

Phone: \_\_\_\_\_

E-mail: \_\_\_\_\_

Family membership: \$10 annually

Business membership: \$20 annually

Name of Business: \_\_\_\_\_

New Member

Renewal

Make checks payable to LNA. Dues are for Jan.-Dec.

Mail to LNA, PO Box 55193, Omaha, NE 68155.

Each adult 18 or older, 2 max. per family or business who pay dues and lives, owns property, or owns/operates a business in the LNA boundaries shall be eligible to vote on Association matters.

LNA boundaries: East - 29th St., North - Dodge St.,  
 South - Pacific St., West - 36th St.